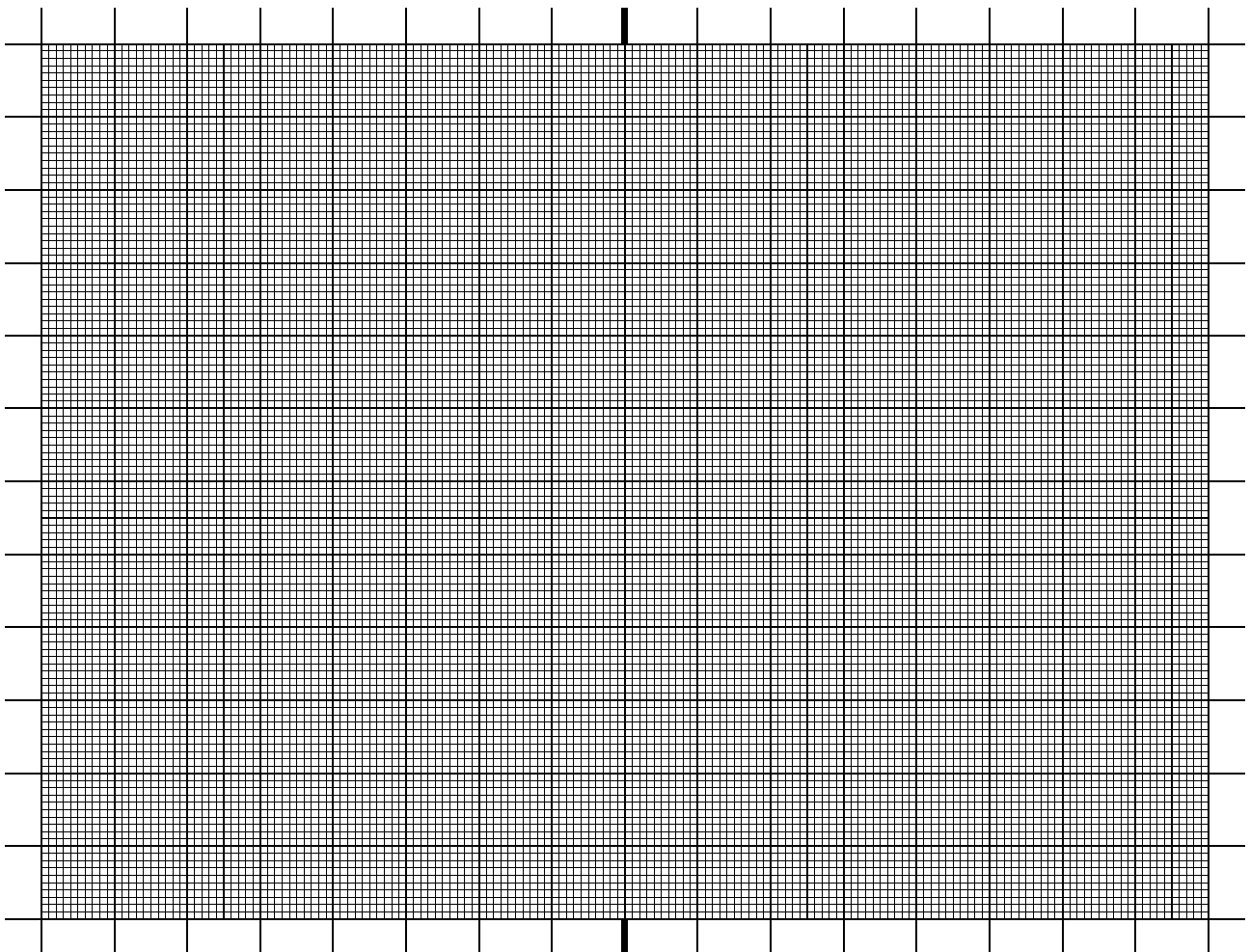
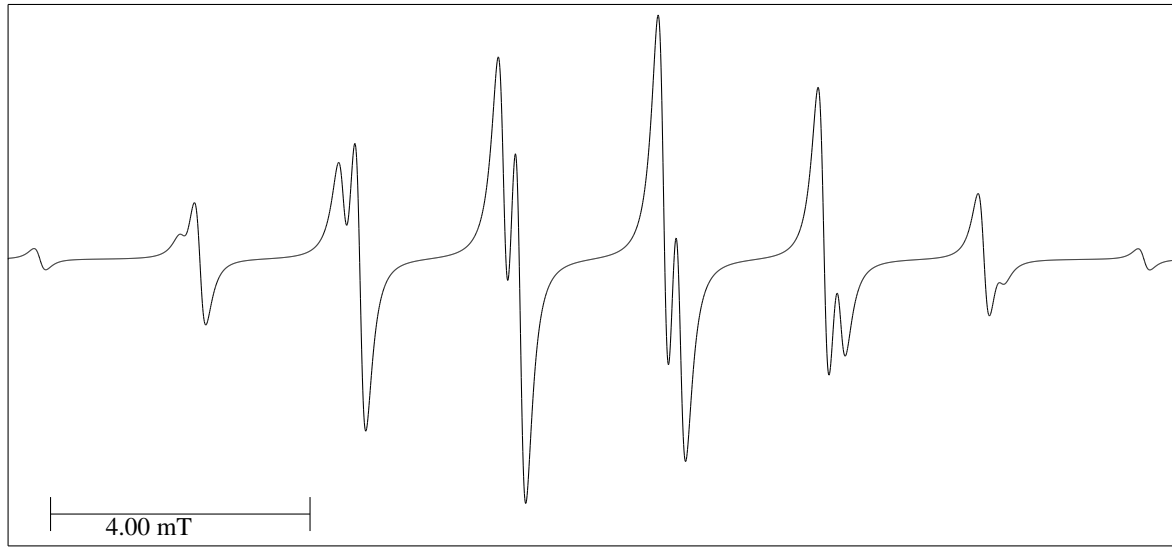


Radical neutro isopropilo [a017] $(CH_3)_2 - \dot{C}H$



Constantes de acoplamiento:

$a_{CH_3} = \dots\dots\dots \text{cm} \equiv \dots\dots\dots \text{mT}$

$a_{CH} = \dots\dots\dots \text{cm} \equiv \dots\dots\dots \text{mT}$

Longitud del espectro:

Usando la Ec. (8) = $\dots\dots\dots \text{mT}$;

Experimental = $\dots\dots\dots \text{mT}$